

Price List

September 2025



Welcome to the **Vivante™** experience





NO MATTER THE CROWD THAT MAY APPEAR

*Life sounds
beautifully clear*

Vivante Feature Summary

Tech level	Level 9 premium	Level 7 advanced	Level 5 standard	Level 3 essential	Level 1 lower essential
Environmental classification	8 listening environments Conversation in loud noise Conversation in a crowd Conversation in a small group Music Noise Quiet Conversation in quiet Conversation in noise 2 streaming environments Media speech Media music	6 listening environments Conversation in a small group Music Noise Quiet Conversation in quiet Conversation in noise 2 streaming environments Media speech Media music	4 listening environments Noise Quiet Conversation in quiet Conversation in noise 2 streaming environments Media speech Media music	2 listening environments Conversation in quiet Conversation in noise 2 streaming environments Media speech Media music	AutoMic 2 streaming environments •Media speech •Media music
Sound optimization and performance	Conversation in loud noise (manual program) 360 conversation in car (manual program) AutoFocus 360 Dynamic noise reduction Soft speech lift Pinna Effect 2 Pinna Effect Speech enhancement Noise reduction	Conversation in loud noise (manual program) AutoFocus Dynamic noise reduction Soft speech lift Pinna Effect 2 Pinna Effect Speech enhancement Noise reduction	Pinna Effect 2 Pinna Effect Speech enhancement Noise reduction Soft speech lift	Speech enhancement Noise reduction Pinna Effect	Pinna Effect Speech enhancement Noise reduction
Hardware features	Tap control Made For All direct connectivity Rechargeable	Tap control Made For All direct connectivity Rechargeable	Tap control Made For All direct connectivity Rechargeable	Tap control Made For All direct connectivity Rechargeable	Made For All direct connectivity Rechargeable* Telecoil*
Fine-tuning channels	20	20	16	12	12

Compelling technology in all levels

Experience Innovations

Performance Tracking
FLEX:TRIAL
Log It All
Ratings
Continuous Care
Coach
Remote Adjust

Fitting

Unique first fit approach
Automatic Adaptation Manager
Frequency compression 2
Tinnitus masker
Manual programs

Personalization

Equalizer**
Clarity and comfort buttons
Optional app programs**

Sound stabilization

AntiShock 2
Wind control
Feedback manager

Microphone options

Adaptive directional
Fixed directional
Fixed wide directional
Omni directional

Ease and convenience

Remote Plus app
TV Connector
Remote Control
PartnerMic
RogerDirect
DuoLink
Binaural Phone**

**Not available for lower essential level products

Vivante Feature Overview

AntiShock 2

Instantly suppresses sudden, loud and irritating sounds without affecting speech.

AutoFocus 360 (tech level 9):

AutoFocus 360 uses a binaural network of four microphones to determine where speech is coming from. It automatically steers the beamformer and it also applies dynamic noise reduction when speech is from the front.

AutoFocus (tech level 7):

AutoFocus uses a binaural network of four microphones to determine if speech is coming from the front or another direction. For all directions (other than front) it activates a fixed-wide directional pattern. For speech from the front, AutoFocus adjusts the beamformer forward and applies dynamic noise reduction.

Automatic Adaptation Manager

Automatically and quickly helps transition new wearers from a comfortable first fit to a full target fitting.

AutoMic (tech level 1)

Works continuously in quiet environments to provide awareness and listening comfort, and in noisy environments to emphasize speech and minimize background noise.

Binaural Acoustic Phone

Wirelessly streams audio signals from the cellular or landline phone ear to the other ear without a separate accessory.

Coach

A personal assistant within the Remote Plus app that helps keep clients on track with their hearing goals and helps them remember how to get the most from their hearing devices.

DuoLink

Provides binaural coordination of program/volume changes for each of the available hearing instrument user controls.

Dynamic noise reduction

A spatial noise canceller within AutoFocus and AutoFocus 360 that reduces interfering background noise in conversations to focus on speech from the front.

Equalizer

Provides clients with the ability to customize their sound by making independent (and persistent) changes to bass, mid and treble in any program within the Remote Plus app.

Feedback manager

Uses phase cancellation to instantly suppress annoying whistling or feedback.

FLEX:TRIAL

Clinical demonstration devices that can be programmed to any level of technology at any time, offering clients risk-free trials of amplification.

Frequency compression 2

Compresses high-frequency sounds, that would otherwise be inaudible, into lower, more audible ranges.

HyperFocus: In very loud noise

For face-to-face conversations in loud noise, HyperFocus engages within the conversation in loud noise environment, applying a more highly-focused, binaurally created beam to the front.

Integra OS

An advanced signal processing system that combines powerful binaural communication and automatic optimization of sound performance. It classifies the sound environment and adjusts accordingly.

Log It All

Log It All captures real-life listening data and provides context around the environments the wearer actually spends time as well as where speech is coming from in complex listening environments. This information facilitates evidence-based counseling and technology level differentiation.

Media

Allows the hearing instruments to classify streamed speech and streamed music.

Microphone mode

A range of microphone options is available ranging from omni to adaptive directional with defaults set depending on technology level and automatic environment or manual program.

Noise reduction

Detects competing background noises and reduces their volume accordingly.

Pinna Effect 2

Uses a binaural network of four microphones to apply targeted directivity variably and asymmetrically across the frequency range to minimize the impact of acoustic cues typically lost with hearing instruments.

Pinna Effect

Applies a small degree of directivity in the mid and high frequencies to minimize the impact of acoustic cues typically lost with hearing instruments.

PRISM

Processing Real-time Intelligent Sound Management chip that offers double the memory of our previous chip.

Ratings

Allows the wearer to record their impressions of hearing aid performance using the Remote Plus app. The insights provide valuable information to make the most personalized recommendation by the clinician.

Remote Adjust

Make gain offset and adaptive feature changes in any program remotely and send to clients via the Remote Plus app.

Remote Plus app

A smartphone app that is a remote control for hearing instruments, offers clients personalization features, and gives HCPs insights to provide the best level of care.

Soft speech lift

Enhances the subtle nuances of speech without amplifying low-level environmental noise.

Speech enhancement

Boosts speech by increasing the volume of voices during conversations.

Tap control

Accelerometer that detects a double tap and enables easy access to Bluetooth functionalities.

Tinnitus masker

Noise generator intended to provide a sound enrichment source.

Wind control

Automatically reduces wind noise.

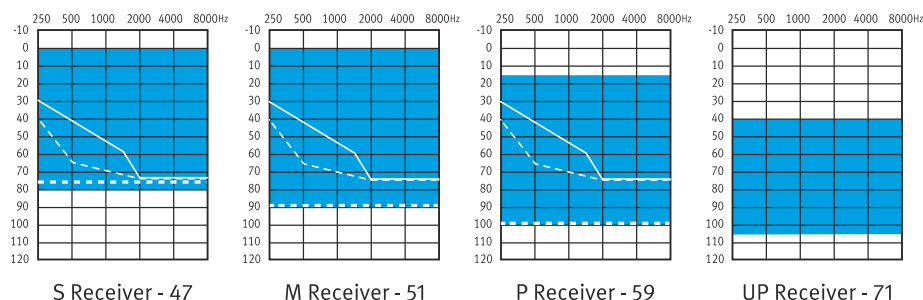
Moxi V-R



	Premium	Advanced	Standard	Essential	Lower Essential
Products	Moxi V9-R	Moxi V7-R	Moxi V5-R	Moxi V3-R	Moxi V1-R
MRP (₹) Kit (2 HI + 1 Charger)	5,51,000	3,68,000	2,00,000	1,20,000	94,000
MRP (₹) Per unit (1 HI + 1 Charger)	2,85,000	1,93,500	1,09,500	69,500	56,000
Channel/Band	20	20	16	12	12

Our smallest instrument that is rechargeable with direct connectivity

Fitting Range



Moxi V Charger



Moxi V Charger is a compact charger for Moxi V-R devices.

MRP (₹)

9,500

Moxi V-R Colors



Platinum (P6)



Pewter (P7)



Charcoal (P8)



Sand (R8)



Amber (P2)



Espresso (P4)

Moxi V-RS

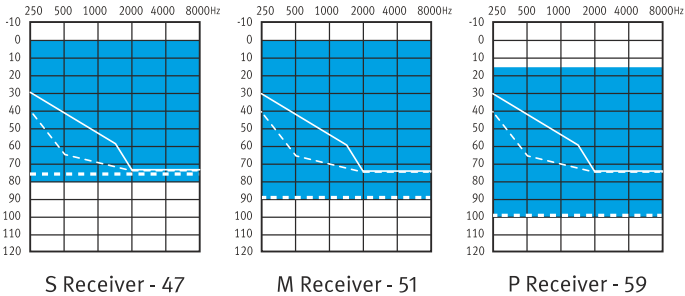


Our thinnest rechargeable hearing instrument on the Vivante platform

	Premium	Advanced	Standard	Essential
Products	Moxi V9-RS	Moxi V7-RS	Moxi V5-RS	Moxi V3-RS
MRP (₹) per pair	5,77,500	4,00,000	2,20,500	1,41,000
Channel/Band	20	20	16	12

1 pair includes 2 HI and 1 charger

Fitting Range



Moxi-RS Charger



A compact charger with a sleek appearance that perfectly complements Moxi V-RS devices, charging the hearing aids in just three hours to offer a full day* of hearing.

* 16 hours of battery on a single charge, including 8 hours of everyday listening, 4 hours of Bluetooth streaming and 4 hours of TV streaming.

MRP (₹)	9,500
---------	-------

Moxi V-RS Colors



Platinum (P6)



Charcoal (P8)



Sand (R8)

Stride™ V-PR



Our rechargeable BTE with direct connectivity

	Premium	Advanced	Standard	Essential	Lower Essential
Products	Stride V9-PR	Stride V7-PR	Stride V5-PR	Stride V3-PR	Stride V1-PR
MRP (₹) Kit (2 HI + 1 Charger)	5,51,000	3,68,000	2,00,000	1,20,000	98,000
MRP (₹) Per unit (1 HI + 1 Charger)	2,82,500	1,91,000	1,07,000	67,000	56,000
Channel/Band	20	20	16	12	12

Stride™ V-UP



Ultra Power BTE with a traditional battery, and direct connectivity

	Premium	Advanced	Standard	Essential	Lower Essential
Products	Stride V9-UP	Stride V7-UP	Stride V5-UP	Stride V3-UP	Stride V1-UP
MRP (₹) Per unit	2,73,000	1,75,500	94,500	56,000	43,000
Channel/Band	20	20	16	12	12

Unitron Charger Combi BTE 2



The next generation charger solution for Stride V-PR devices.

MRP (₹) 7,000

Stride™ V Colors



Platinum (P6)



Pewter (P7)



Charcoal (P8)



Sand (R8)



Amber (P2)



Espresso (P4)

AMAZING EXPERIENCES
COME OUT OF THE BLU



Unitron Blu

Insera™ B-10 NW Omni



	Premium	Advanced	Standard	Essential	Lower Essential
Products	B9-10 NW O	B7-10 NW O	B5-10 NW O	B3-10 NW O	B1-10 NW O
MRP (₹)	2,49,000	1,63,000	84,000	49,000	41,000
Channel/Band	20	20	16	12	12

Our smallest non-wireless omni model with a telecoil (CIC)

Insera™ B-312 NW Omni



	Premium	Advanced	Standard	Essential	Lower Essential
Products	B9-312 NW O	B7-312 NW O	B5-312 NW O	B3-312 NW O	B1-312 NW O
MRP (₹)	2,49,000	1,63,000	84,000	49,000	41,000
Channel/Band	20	20	16	12	12

Our non-wireless omni model with a telecoil (CIC)

Insera™ B-10 NW Omni



	Premium	Advanced	Standard	Essential	Lower Essential
Products	B9-10 NW O	B7-10 NW O	B5-10 NW O	B3-10 NW O	B1-10 NW O
MRP (₹)	2,49,000	1,63,000	84,000	49,000	41,000
Channel/Band	20	20	16	12	12

Our smallest non-wireless omni model with a telecoil (IIC)

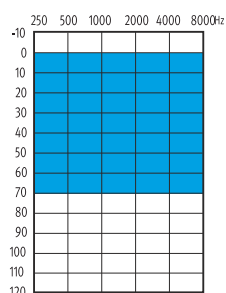
Insera™ B W 312 DIR*



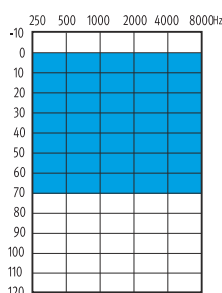
	Premium	Advanced	Standard	Essential	Lower Essential
Products	B9 W 312 Dir	B7 W 312 Dir	B5 W 312 Dir	B3 W 312 Dir	B1 W 312 Dir
MRP (₹)	2,49,000	1,63,000	84,000	49,000	41,000
Channel/Band	20	20	16	12	12

Our wireless ITC model with direct connectivity

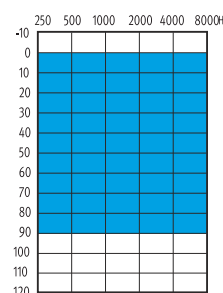
Fitting Range



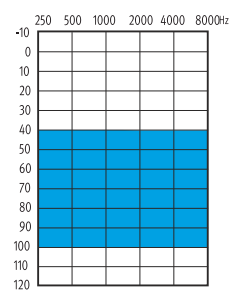
M Receiver - 40



P Receiver - 50



SP Receiver - 60



UP Receiver - 70

*UP receiver available only in ITC

Choose

simplicity without
compromise.

Ativo

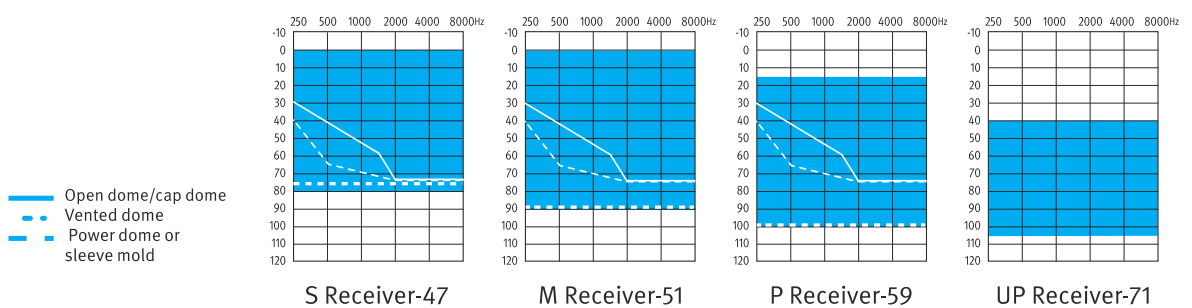


Ativo RIC / BTE

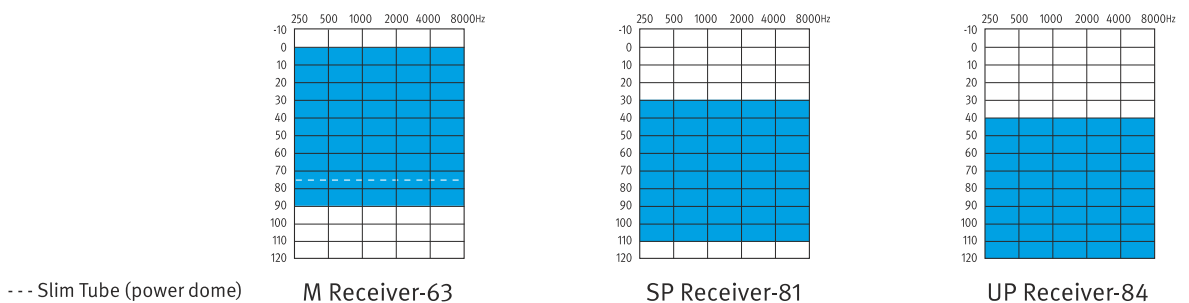


Products	Ativo RIC (S, M, P, UP)	Ativo BTE (M, SP, UP)
MRP (₹) Per unit	35,000	
Channel/Band	12	

Ativo RIC Fitting Range



Ativo BTE Fitting Range





Accessories

Chargers

Moxi V Charger



MRP (₹) 9,500

Moxi-RS Charger



MRP (₹) 9,500

Unitron Charger Combi
BTE 2



MRP (₹) 7,000

TV Connector



MRP (₹) 16,500

Remote Control



MRP (₹) 11,500

PartnerMic



MRP (₹) 20,500

Roger Select™ 3

(Unlimited receivers)



MRP (₹) 1,00,000

Adaptive microphone suitable for all listening situations

Roger On™ 3

(Unlimited receivers)



MRP (₹) 1,20,000

Versatile microphone dedicated for all conversation where background noise is present

Roger NeckLoop 03



MRP (₹) 34,500

X 03 (Single Receiver)



MRP (₹) 17,500

Guidelines for online sales and distribution of products of Sonova Hearing India Private Limited

Effective: 1st June 2019

Sonova Hearing India Private Limited ("SHIPL"), sells medical devices including hearing aids and wireless hearing accessories (the "**Products**") in India inter alia which bear the trademark and brand of "Phonak" and "Unitron".

In the Indian market, SHIPL sells its Products through its authorised distributors and dealers, who provide high standards of best practices, including in hearing assessment, fitting, programming and subsequent rehabilitative services to its patients.

Authorised dealers follow a recommended protocol and have knowledge of SHIPL's technology, skills and / or expertise as regards the suitability, programming and fitting of the Products and software, therefore in an individual appointment they are able to provide patients with numerous value added services including but not limited to, (i.)evaluation of the patient's hearing loss through an audiometric test, (i) select the right technology for the patient as per the patient's needs; (ii) fine-tune the hearing aid fitting with available software based on patient-specific behavioural measures and (iii) provide counselling and aural rehabilitative services relative to the patient's specific needs, including care and maintenance of the hearing aid, (iv.) replacements and (v.) instructions on hearing aid features, such as how to utilize it with wireless systems by applying their knowhow of the Products.

Due to such services and support provided to the patients, it is beneficial to the patients that the Products are provided by only our authorised distributors (who sell to our dealers) and our dealers.

In addition, it is SHIPL's right to protect the sanctity of its distribution channels, including both online and offline sales, in an attempt to safeguard the goodwill and reputation of its Products and its brand image.

Every seller who wishes to sell SHIPL's Products online is required to obtain prior written approval from SHIPL for the sale of its Products. In this manner, the risks associated with online sales of its Products are minimized by SHIPL.

SHIPL will, without assuming any liability, refuse to accept sales of its Products made through online marketplaces by any seller or by e-commerce platform (not being an authorized distributor or dealer of SHIPL, who fall under the subsequent paragraph), and no after sales and warranty may be granted by SHIPL (at its discretion) in relation to such unauthorised sales.

The above mentioned guidelines are also applicable to all authorised distributors and dealers of SHIPL, who are hereby restrained from using, marketing, advertising, displaying or supplying for sale, SHIPL's Products on any online platform without the prior written approval of SHIPL. SHIPL will independently determine noncompliance of the above guidelines. In the event an authorized distributor or a dealer does not comply with the above guidelines, SHIPL may take action against such authorized distributor(s) and dealers, including discontinuation of its engagement with them.

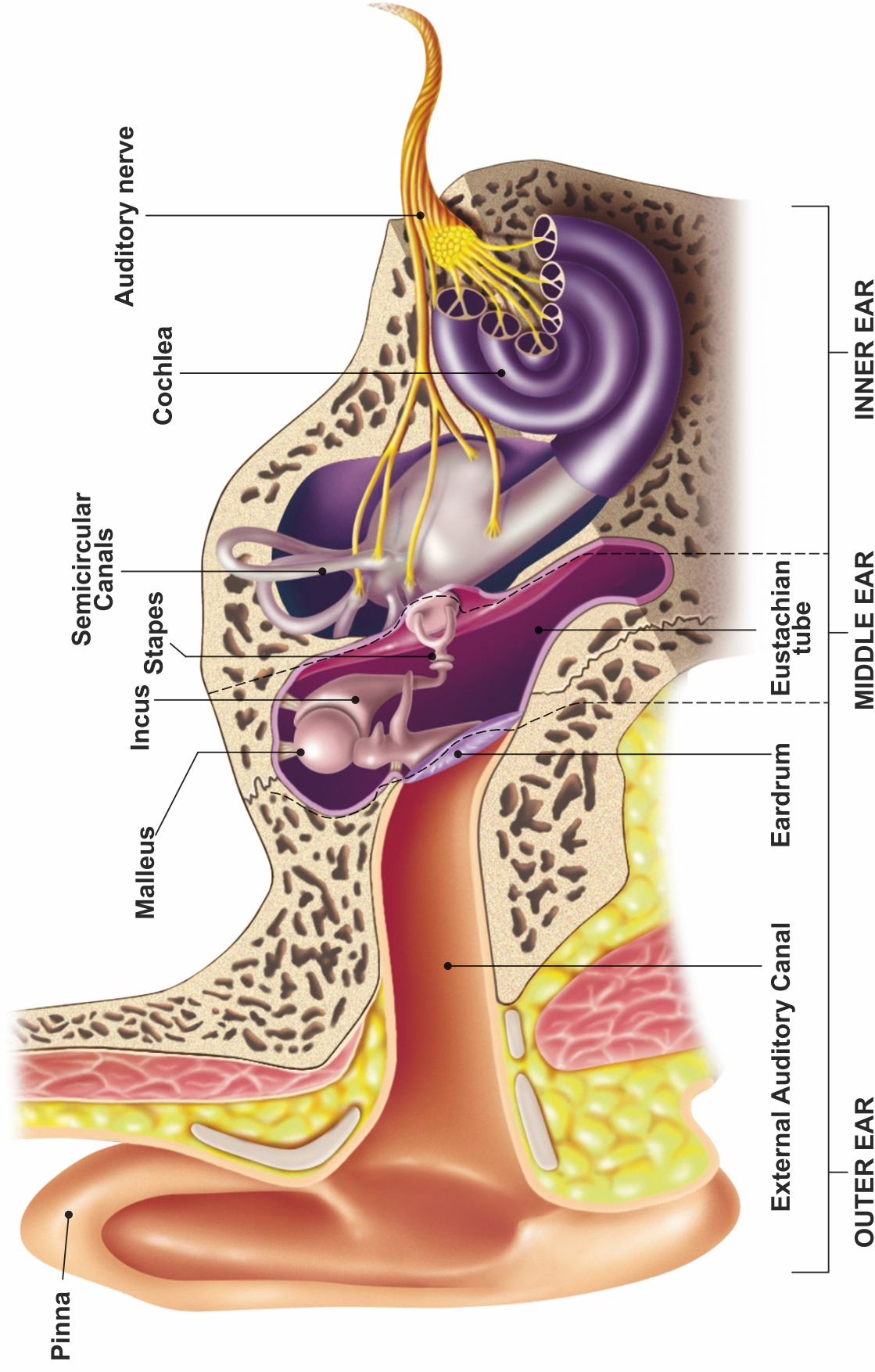
As on 1st June 2019, SHIPL has not authorized any person, proprietorship, firm, company or e-commerce marketplace to sell its Products online.

Anyone found listing, selling, marketing, advertising, displaying or supplying for sale, SHIPL's Products on an any online marketplace or e-commerce platform and displaying SHIPL's images and logos in connection with such sale, without obtaining prior written approval from SHIPL, will be considered as infringing SHIPL's intellectual property rights and may be subject to legal proceedings at its sole risk and cost.

* Price list effective from 1st September, 2025

This price list supersedes all previous price lists and is subject to changes without any prior notice.

EAR Anatomy



unitron[™] Love the
experience

*Reach out to Unitron representative for availability of color in your market.

At Unitron, we empower people with life-enhancing hearing experiences that fit seamlessly into their world. Our sound performance technology, Experience Innovations, and intuitive design work perfectly together to provide personalization and optimization. Because everyone deserves to Love the experience.[™]

© 2025 Unitron. All rights reserved.

unitron.com/in

sonova
HEAR THE WORLD

Sonova Hearing India Pvt.Ltd
503-506, A & B Wing, Kanakia Zillion, LBS Marg, BKC Annexe,
Near Old Kurla Depo, Kurla (W), Mumbai-400070, India.
Phone No.: 022 6782 0666 | Toll Free No.: 1800 120 4401