

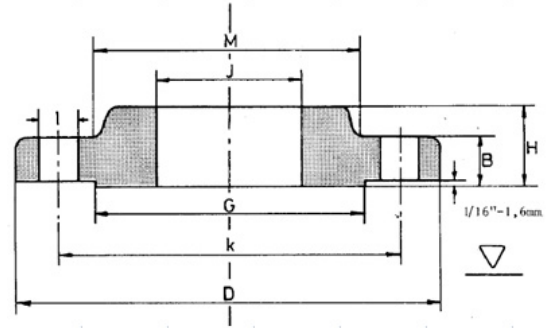
Slipon Flanges

150#

Nominal Pipe Size	Outside Diam. D	Diam. of Bore J	Thickness Min. B	Length thru Hub H	Diam. at Base of Hub M	O.D. of Raised Face G	Number of Holes	Diam of Holes I	Bolt Circle Diam. K	Approx Weight Kg
1/2"	90	22.4	11.6	16	30	35.1	4	15.7	60.5	0.4
3/4"	100	27.7	13.2	16	38	42.9	4	15.7	69.9	0.6
1"	110	34.5	14.7	18	49	50.8	4	15.7	79.2	0.8
1.1/4"	115	43.2	16.3	21	59	63.5	4	15.7	88.9	1
1.1/2"	125	49.5	17.9	23	65	73.2	4	15.7	98.6	1.4
2"	150	62	19.5	26	78	91.9	4	19.1	120.7	2.1
2.1/2"	180	74.7	22.7	29	90	104.6	4	19.1	139.7	3.3
3"	190.2	90.7	24.3	31	108	127	4	19.1	152.4	3.9
3.1/2"	215	103.4	24.3	32	122	139.7	8	19.1	177.8	4.9
4"	230	116.1	24.3	34	135	157.2	8	19.1	190.5	5.4
5"	255	143.8	24.3	37	164	185.7	8	22.4	215.9	6.1
6"	280	170.7	25.9	39	192	215.9	8	22.4	241.3	7.5
8"	345	221.5	29	45	246	269.7	8	22.4	298.5	12.1
10"	405	276.4	30.6	50	305	323.9	12	25.4	362	16.5
12"	485	327.2	32.2	56	365	381	12	25.4	431.8	27
14"	535	359.2	35.4	58	400	412.8	12	28.4	476.2	35
16"	595	410.5	37	64	457	469.9	16	28.4	539.8	45
18"	635	461.8	40.1	69	505	533.4	16	31.8	577.9	49
20"	700	513.1	43.3	73	559	584.2	20	31.8	635	62
24"	815	616	48.1	83	663	692.2	20	35.1	749.3	87

Note: raised face are included in flange thickness

All dimensions are in mm

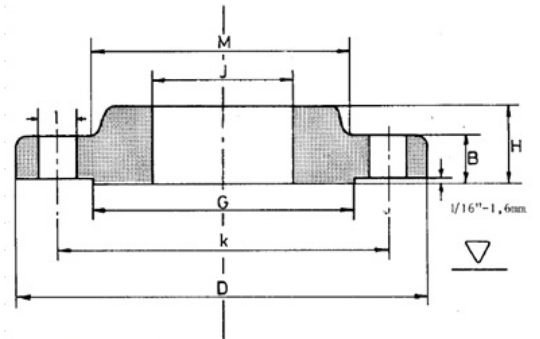


300#

Nominal Pipe Size	Outside Diam. D	Diam. of Bore J	Thickness Min. B	Length thru Hub H	Diam. at Base of Hub M	O.D. of Raised Face G	Number of Holes	Diam of Holes I	Bolt Circle Diam. K	Approx Weight Kg
1/2"	95	22.3	14.7	23	38	35	4	15.7	66.5	0.7
3/4"	115	27.7	16.3	26	48	42.9	4	19	82.5	1.2
1"	125	34.5	17.9	27	54	50.8	4	19	88.9	1.4
1.1/4"	135	43.2	19.5	27	64	63.5	4	19	98.5	1.7
1.1/2"	155	49.5	21.1	31	70	73.1	4	22.3	114.3	2.5
2"	165	62	22.7	34	84	91.9	8	19	127	2.9
2.1/2"	190	74.7	25.9	39	100	104.6	8	22.3	149.3	4.4
3"	210	90.7	29	43	117	127	8	22.3	168.1	5.6
3.1/2"	230	103.4	30.6	45	133	139.7	8	22.3	184.1	7.4
4"	255	116.1	32.2	48	146	157.2	8	22.3	200.1	10
5"	280	143.8	35.4	51	178	185.6	8	22.3	234.9	12.3
6"	320	170.7	37	53	206	215.9	12	22.3	269.7	15.6
8"	380	221.5	41.7	62	260	269.7	12	25.4	330.2	24.2
10"	445	276.3	48.1	67	321	323.8	16	28.4	387.3	34.1
12"	520	327.1	51.3	73	375	381	16	31.7	450.8	50
14"	585	359.1	53.4	77	425	412.7	20	31.7	514.3	70
16"	650	410.5	57.6	83	483	469.9	20	35	571.5	89
18"	710	461.8	60.8	89	533	533.4	24	35	628.6	109
20"	775	513.1	64	96	587	584.2	24	35	685.8	134
24"	915	615.9	70.3	107	702	692.1	24	41.1	812.8	201

Note: raised face are included in flange thickness

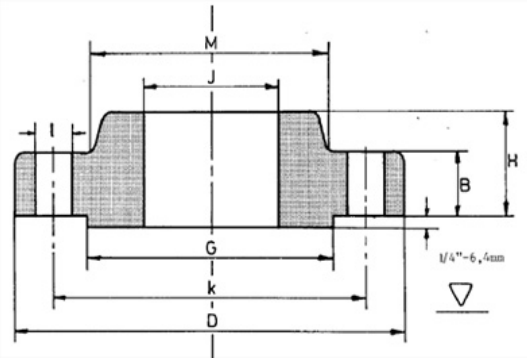
All dimensions are in mm



600#

Nominal Pipe Size	Outside Diam. D	Diam. of Bore J	Thickness Min. B	RF Height	Length thru Hub H	Diam. at Base of Hub M	O.D. of Raised Face G	Number of Holes	Diam of Holes I	Bolt Circle Diam. K	Approx Weight Kg
1/2"	95	22.2	14.3	7	22	38	35.1	4	15.7	66.5	0.8
3/4"	115	27.7	15.9	7	25	48	42.9	4	19.1	82.6	1.3
1"	125	34.5	17.5	7	27	54	50.8	4	19.1	88.9	1.6
1.1/4"	135	43.2	20.7	7	29	64	63.5	4	19.1	98.6	2.1
1.1/2"	155	49.5	22.3	7	32	70	73.2	4	22.4	114.3	3
2"	165	62	25.4	7	37	84	91.9	8	19.1	127	3.6
2.1/2"	190	74.7	28.6	7	41	100	104.6	8	22.4	149.4	5.3
3"	210	90.7	31.8	7	46	117	127	8	22.4	168.1	7
3.1/2"	230	103.4	35	7	49	133	139.7	8	25.4	184.2	9
4"	275	116.1	38.1	7	54	152	157.2	8	25.4	215.9	14.5
5"	330	143.8	44.5	7	60	189	185.7	8	28.4	266.7	25
6"	355	170.7	47.7	7	67	222	215.9	12	28.4	292.1	29
8"	420	221.5	55.6	7	76	273	269.7	12	31.8	349.3	44
10"	510	276.4	63.5	7	86	343	323.9	16	35.1	431.8	71
12"	560	327.2	66.7	7	92	400	381	20	35.1	489	85
14"	605	359.2	69.9	7	94	432	412.8	20	38.1	527.1	99
16"	685	410.5	76.2	7	106	495	469.9	20	41.1	603.3	142
18"	745	461.8	82.6	7	117	546	533.4	20	44.5	654.1	173
20"	815	513.1	88.9	7	127	610	584.2	24	44.5	723.9	220
24"	940	616	101.6	7	140	718	692.2	24	50.8	838.2	312

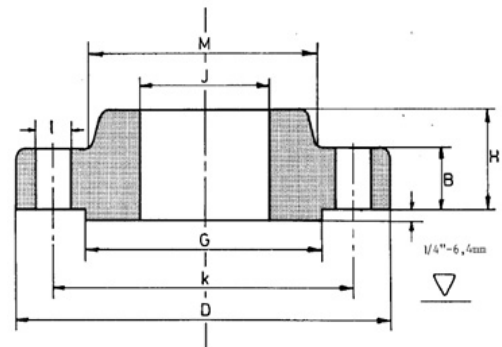
All dimensions are in mm



900#

Nominal Pipe Size	Outside Diam. D	Diam. of Bore J	Thickness Min. B	RF Height	Length thru Hub H	Diam. at Base of Hub M	O.D. of Raised Face G	Number of Holes	Diam of Holes I	Bolt Circle Diam. K	Approx Weight Kg
1/2"	120	22.3	22.3	7	32	38	35	4	22.3	82.5	1.8
3/4"	130	27.7	25.4	7	35	44	42.9	4	22.3	88.9	2.4
1"	150	34.5	28.6	7	41	52	50.8	4	25.4	101.6	3.5
1.1/4"	160	43.2	28.6	7	41	64	63.5	4	25.4	111.2	4
1.1/2"	180	49.5	31.8	7	44	70	73.1	4	28.4	123.9	5.4
2"	215	62	38.1	7	57	105	91.9	8	25.4	165.1	10
2.1/2"	245	74.7	41.3	7	64	124	104.6	8	28.4	190.5	14
3"	240	90.7	38.1	7	56	127	127	8	25.4	190.5	12
4"	290	116.1	44.5	7	72	159	157.2	8	31.7	234.9	20
5"	350	143.8	50.8	7	81	190	185.6	8	35	279.4	32
6"	380	170.7	55.6	7	88	235	215.9	12	31.7	317.5	42
8"	470	221.5	63.5	7	104	298	269.7	12	38.1	393.7	71
10"	545	276.3	69.9	7	110	368	323.8	16	38.1	469.9	101
12"	610	327.1	79.4	7	119	419	381	20	38.1	533.4	133
14"	640	359.1	85.8	7	132	451	412.7	20	41.1	558.8	153
16"	705	410.5	88.9	7	135	508	469.9	20	44.4	615.9	185
18"	785	461.8	101.6	7	154	565	533.4	20	50.8	685.8	258
20"	855	513.1	108	7	161	622	584.2	20	53.8	749.3	317
24"	1,040.00	615.9	139.7	7	205	749	692.1	20	66.5	901.7	606

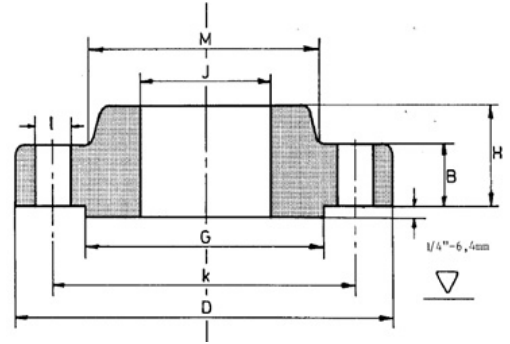
All dimensions are in mm



1500#

Nominal Pipe Size	Outside Diam. D	Diam. of Bore J	Thickness Min. B	RF Height	Length thru hub	Diam. at Base of Hub M	O.D. of Raised Face G	Number of Holes	Diam of Holes I	Bolt Circle Diam. K	Approx Weight Kg
1/2"	120	22.2	29.3	7	32	38	35	4	22.3	82.5	1.8
3/4"	130	27.7	32.4	7	35	44	42.9	4	22.3	88.9	2.4
1"	150	34.5	35.6	7	41	52	50.8	4	25.4	101.6	3.5
1.1/4"	160	43.2	35.6	7	41	64	63.5	4	25.4	111.2	4
1.1/2"	180	49.5	38.8	7	44	69.8	73.1	4	28.4	123.9	5.4
2"	215	62	45.1	7	57	104.6	91.9	8	25.4	165.1	10
2.1/2"	245	74.7	48.3	7	64	123.9	104.6	8	28.4	190.5	14
3"	265	90.7	54.7	7		133.3	127	8	31.7	203.2	21.5
4"	310	116.1	61	7		162	157.2	8	35	241.3	33.2
5"	375	143.8	80.1	7		196.8	185.6	8	41.1	292.1	60.8
6"	395	170.7	89.6	7		228.6	215.9	12	38.1	317.5	74.8
8"	485	221.5	99.1	7		292.1	269.7	12	44.4	393.7	118
10"	585	276.3	115	7		368.3	323.8	12	50.8	482.6	197
12"	675	327.1	130.6	7		450.8	381	16	53.8	571.5	264
14"	750	359.1	142.4	7		495.3	412.7	16	60.4	635	404
16"	825	410.5	153.1	7		552.4	469.9	16	66.5	704.8	522
18"	915	461.8	169	7		596.9	533.4	16	73.1	774.7	669
20"	985	513.1	184.8	7		641.3	584.2	16	79.2	831.8	805
24"	1170	615.9	210.2	7		692.1	16	91.9	990.6	1326	

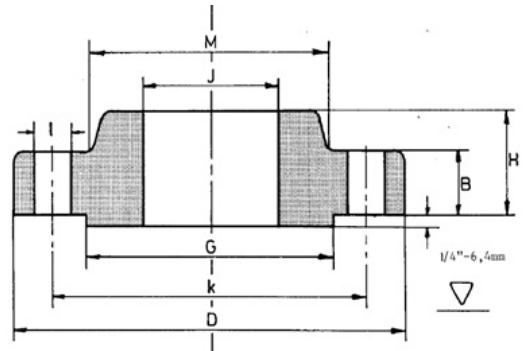
All dimensions are in mm



2500#

Nominal Pipe Size	Outside Diam. D	Diam. of Bore J	Thickness Min. B	RF Height	Length thru Hub H	Diam. at Base of Hub M	O.D. of Raised Face G	Number of Holes	Diam of Holes I	Bolt Circle Diam. K	Approx Weight Kg
1/2"	135	22.3	30.2	7	40	42.9	35.1	4	22.4	88.9	3
3/4"	140	27.7	31.8	7	43	50.8	42.9	4	22.4	95.3	3.6
1"	160	34.5	35.00	7	48	57.2	50.8	4	25.4	108	5
1.1/4"	185	43.2	38.1	7	52	73.2	63.5	4	28.4	130	7.2
1.1/2"	205	49.5	44.5	7	60	79.2	73.2	4	31.8	146.1	10
2"	235	62	50.9	7	70	95.3	91.9	8	28.4	171.5	17
2.1/2"	265	74.7	57.2	7	79	114.3	104.6	8	31.8	196.9	25
3"	305	90.7	66.7	7		133.4	127	8	35.1	228.6	38
4"	355	116.1	76.2	7		165.1	157.2	8	41.1	273.1	56
5"	420	143.8	92.1	7		203.2	185.7	8	47.8	323.9	95
6"	485	170.7	108.00	7		235	215.9	8	53.8	368.3	147
8"	550	221.5	127.00	7		304.8	269.7	12	53.8	438.2	220
10"	675	276.3	165.10	7		374.4	323.9	12	66.5	539.8	410
12"	760	327.1	184.2	7		441.5	381	12	73.2	619.3	500

All dimensions are in mm



* There will may be typical error