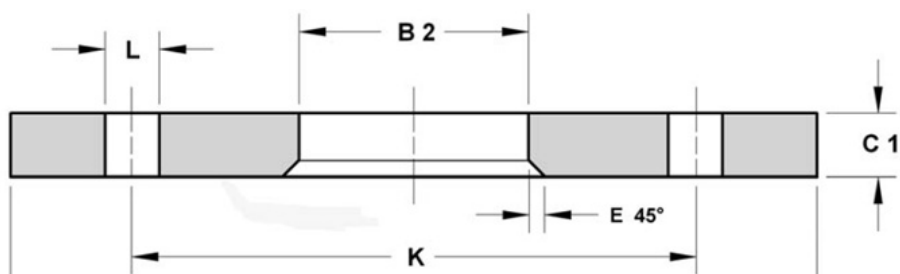


EN 1092-1:2001 /TYPE O2/A

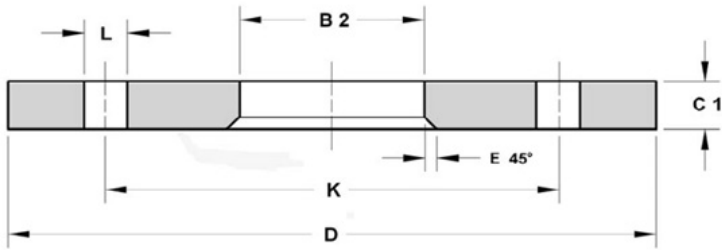
LOOSE PLATE FLANGES PN 6



DN	D	K	FORI/ BOLTING			B2	C1	E	KG
			L	N DEGREE	SIZE				
10	75	50	11	4	M10	21	12	3	0.36
15	80	55	11	4	M10	25	12	3	0.41
20	90	65	11	4	M10	31	14	4	0.60
25	100	75	11	4	M10	38	14	4	0.74
32	120	90	14	4	M12	46	16	5	1.19
40	130	100	14	4	M12	53	16	5	1.39
50	140	110	14	4	M12	65	16	5	1.53
65	160	130	14	4	M12	81	16	6	1.89
80	190	150	18	4	M16	94	18	6	2.98
100	210	170	18	4	M16	120	18	6	3.46
125	240	200	18	8	M16	145	20	6	4.60
150	265	225	18	8	M16	174	20	6	5.22
200	320	280	18	8	M16	226	22	6	7.15
250	375	335	18	12	M16	281	24	8	9.61
300	440	395	22	12	M20	333	24	8	12.60
350	490	445	22	12	M20	365	26	8	15.60
400	540	495	22	16	M20	416	28	8	18.40
450	595	550	22	16	M20	467	30	8	21.40
500	645	600	22	20	M20	519	30	8	24.60
600	755	705	26	20	M24	622	32	8	35.00
700	860	810	26	24	M24				48.00
800	975	920	30	24	M27				63.00
900	1075	1020	30	24	M27				74.50
1000	1175	1120	30	28	M27				82.00

All dimensions are in mm

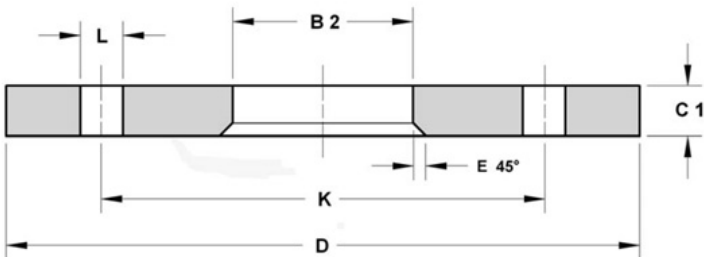
LOOSE PLATE FLANGES PN 10



DN	D	K	FORI/ BOLTING			B2	C1	E	KG
			L	N DEGREE	SIZE				
200	340	295	22	8	M20	226	24	6	9.31
250	395	350	22	12	M20	281	26	8	11.9
300	445	400	22	12	M20	333	26	8	13.80
350	505	460	22	16	M20	365	28	8	19.00
400	565	515	26	16	M24	416	32	8	25.90
450	615	565	26	20	M24	467	36	8	33.50
500	670	620	26	20	M24	519	38	8	41.10
600	780	725	30	20	M27	622	42	8	54.50
700	895	840	30	24	M27				65.00
800	1015	950	33	24	M30				90.00
900	1115	1050	33	28	M30				100.00
1000	1230	1160	36	28	M33				130.00

All dimensions are in mm

LOOSE PLATE FLANGES PN 16

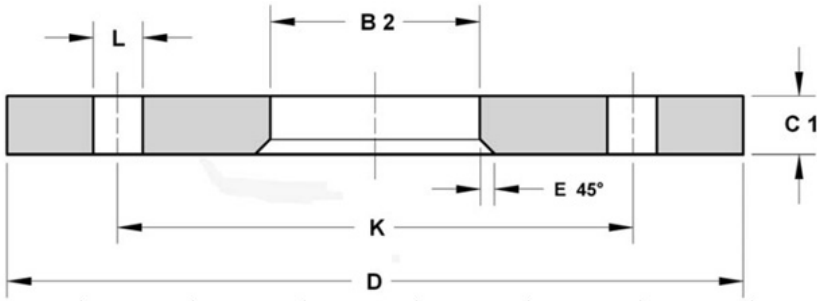


DN	D	K	FORI/ BOLTING			B2	C1	E	KG
			L	N DEGREE	SIZE				
50	165	125	18	4	M16	65	19	5.00	2.50
65	185	145	18	4	M16	81	20	6.00	3.00
80	200	160	18	8	M16	94	20	6.00	3.50
100	220	180	18	8	M16	120	22	6.00	4.40
125	250	210	18	8	M16	145	22	6.00	5.50
150	285	240	22	8	M20	174	24	6.00	7.00
200	340	295	22	12	M20	226	26	6.00	9.50

250	405	355	26	12	M24	281	29	8.00	14.00
300	460	410	26	12	M24	333	32	8.00	19.00
350	520	470	26	16	M24	365	35	8.00	28.00
400	580	525	30	16	M27	416	38	8.00	36.00
450	640	585	30	20	M27	467	42	8.00	46.00
500	715	650	33	20	M30	510	46	8.00	64.00
600	840	770	36	20	M33	622	52	8.00	96.00
700	910	840	36	24	M33		46		88.00
800	1025	950	39	24	M36		48		115.00
900	1125	1050	39	28	M36		50		125.00
1000	1255	1170	42	28	M39		50		160.00

All dimensions are in mm

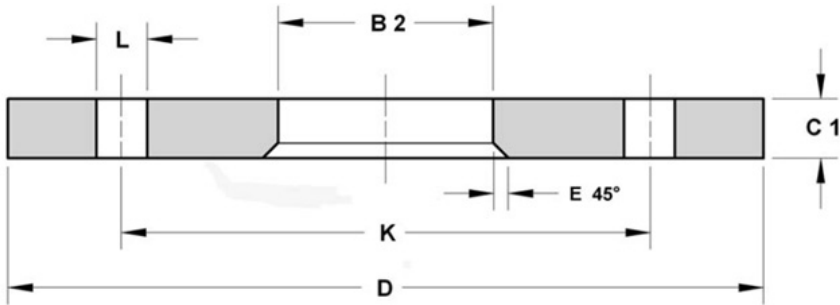
LOOSE PLATE FLANGES PN 25



DN	D	K	FOR/ BOLTING				B2	C1	E	KG
			L	N DEGREE	SIZE					
200	360	310	26	12	M24	226	32	6	14.50	
250	425	370	30	12	M27	281	35	8	20.00	
300	485	430	30	16	M27	333	38	8	26.50	
350	555	490	33	16	M30	365	42	8	42.00	
400	620	550	36	16	M33	416	46	8	55.00	
450	670	600	36	20	M33	467	50	8	64.50	
500	730	660	36	20	M33	519	56	8	84.00	
600	845	770	39	20	M36	622	68	8	127.50	
700	960	875	42	24	M39					
800	1085	990	48	24	M45					
900	1185	1090	48	28	M45					
1000	1320	1210	56	28	M52					

All dimensions are in mm

LOOSE PLATE FLANGES PN 40



DN	D	K	FORI/ BOLTING			B2	C1	E	KG
			L	N DEGREE	SIZE				
10	90	60	14	4	M12	21	14	3	0.60
15	95	65	14	4	M12	25	14	3	0.67
20	105	75	14	4	M12	31	16	4	0.94
25	115	85	14	4	M12	38	16	4	1.00
32	140	100	18	4	M16	47	18	5	1.83
40	150	110	18	4	M16	53	18	5	2.00
50	165	125	18	4	M16	65	20	5	2.50
65	185	145	18	8	M16	81	22	6	3.50
80	200	160	18	8	M16	94	24	6	4.50
100	235	190	22	8	M20	120	26	6	6.00
125	270	220	26	8	M24	145	28	6	8.00
150	300	250	26	8	M24	174	30	6	10.30
200	375	320	30	12	M27	226	36	6	18.00
250	450	385	33	12	M30	281	42	8	29.50
300	510	450	33	16	M30	333	48	8	41.50
350	5870	510	36	16	M33	365	52	8	62.00
400	660	585	39	16	M36	416	60	8	89.50
450	685	610	39	20	M36	467	66	8	91.50
500	755	670	42	20	M39	519	72	8	120.00
600	890	795	48	20	M45	622	84	8	189.00

All dimensions are in mm

* There will may be typical error